



## Aluminum Flatbed Trailer

### DIMENSIONS

Weight (+ / - 3%) 9,100 lbs  
8,800 lbs w/Aluminum wheels  
Length / Width 48' x 102"  
Upper Coupler 1/4" Hi Tensile Steel  
Kingpin 30" From Nose



### FRAME

80,000 lbs Distributed  
55,000 lbs in Coil Area  
25.5" Deep Web in Center  
Mechanically Fastened Continuous Mainbeam  
4" Camber • 7" Wide Bottom Flange

### SUSPENSION

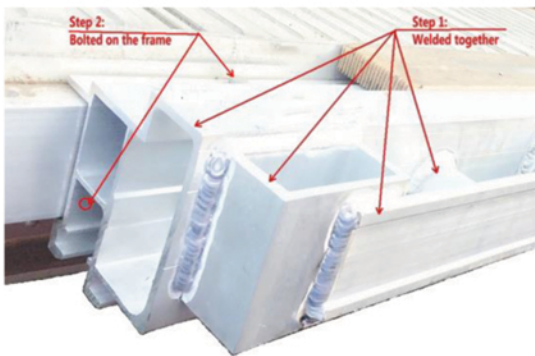
Axle Spread 122" Fixed  
Lightweight Steel Wheels  
Air Ride

### SIDE RAIL

Bolt-on Aluminum Side Rail  
Integrated Aluminum Winch Track on Both Sides  
(12) Sliding Winches  
Traditional Pockets and Spools  
Stake Pockets 24" on Center

### FLOORING

6061-T6 Extruded 3-1/8" Aluminum  
(2) Wood Apitong Nailer Strips  
Heavy Wall Extruded Aluminum  
in Coil-Pack Area



### INCIDENTALS

Four White Mud Flaps w/Logo  
Registration Holder  
Conspicuity Tape Installed  
in Recess on Rub Rails  
5-Year Limited Warranty

### ELECTRICAL

7-Way Receptacle • Sealed Beam Lights  
Concealed Wiring Harness • Wire Access on Corners